

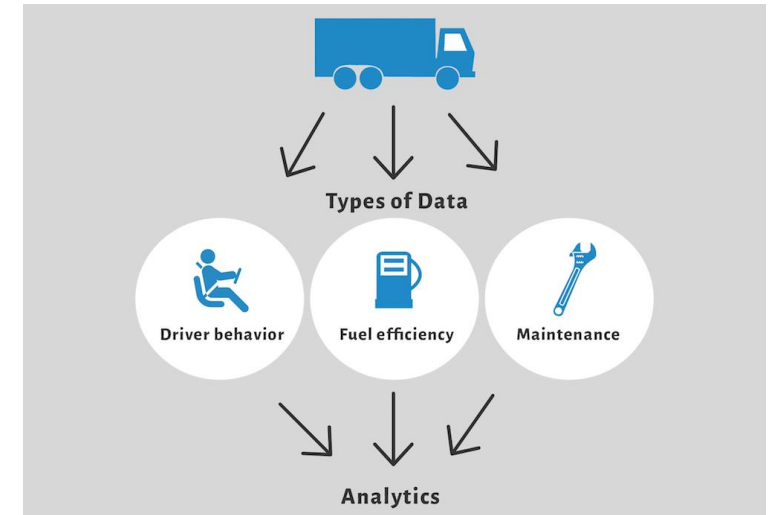
# Pengembangan Teknologi satelit dalam mendukung transportasi



TIRBR-BPPT

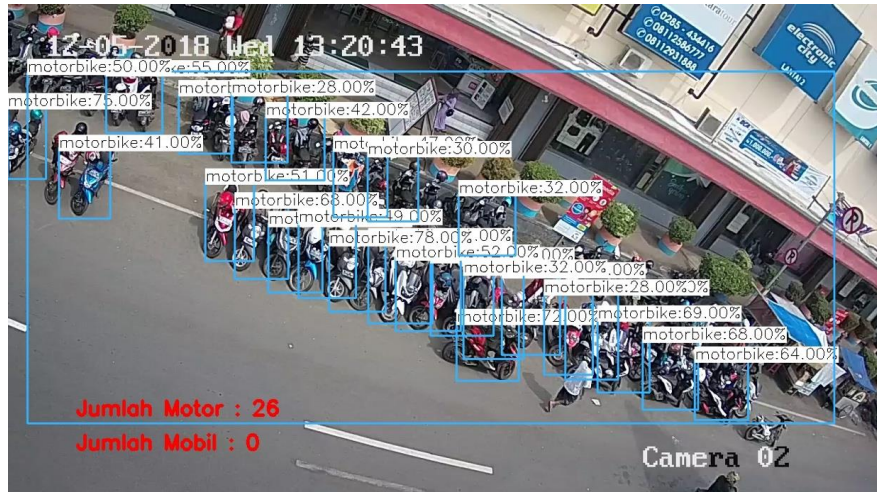
# Teknologi IoT pada Transportasi

- Fleet Management
- Smart Inventory Management
- Public Transit
- Asset Tracking
- GeoFencing



# Kegiatan BPPT

- SLC (Smart Level Crossing)
- On Street Parking Monitoring



E-PARKING

Sistem Parkir Kendaraan

ADMIN

PARKIR MOTOR

Matahari Blok: Kamera 1 Tahun: 2018 Bulan: Desember Tanggal: 19

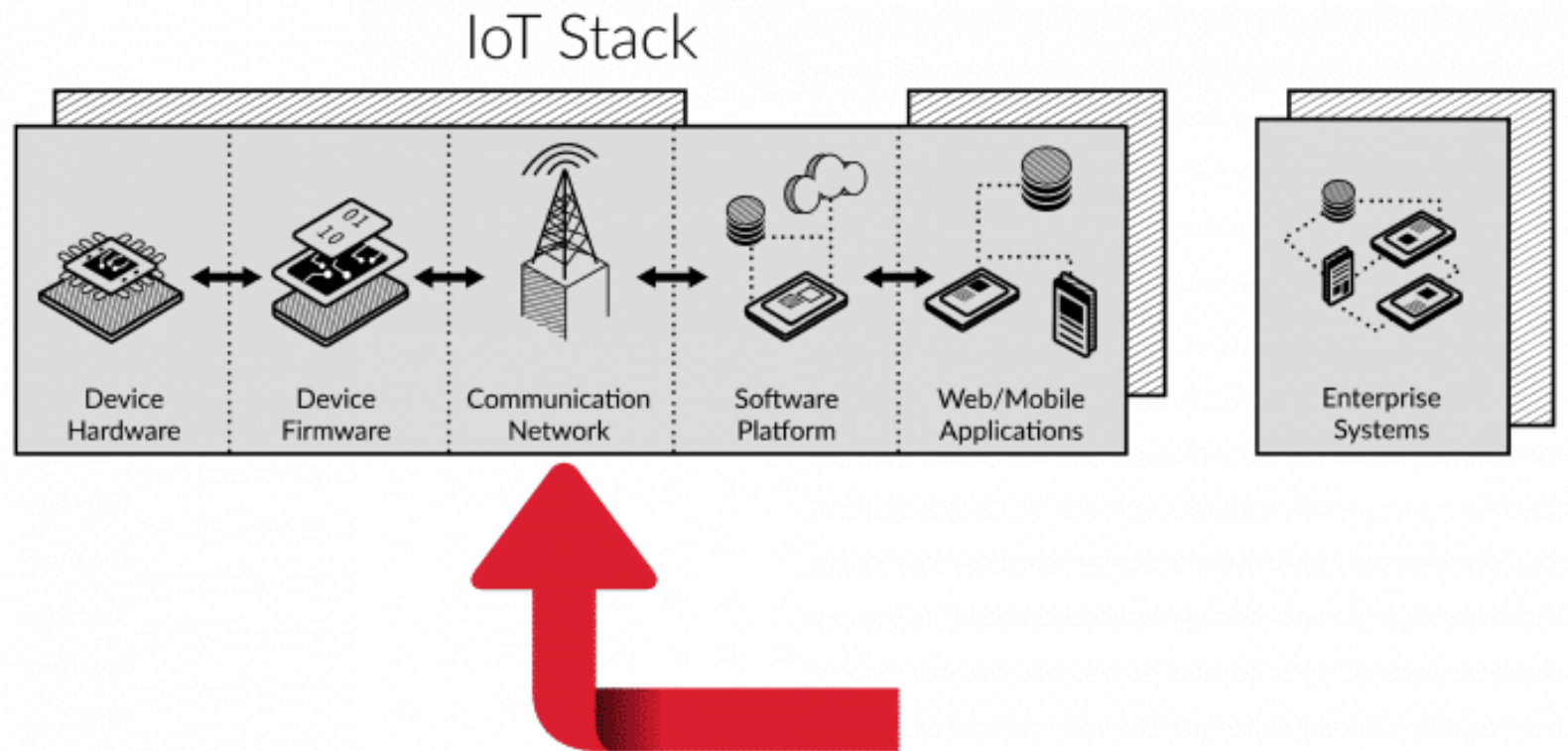
Menampilkan 41 - 50 dari 96 data

No	Kamera	Kapasitas Motor	Jumlah Motor	Jumlah Tersedia	Tanggal	Jam	gambar
41	Kamera 1	150	21	129	19 Dec 2018	13:59	
42	Kamera 1	150	25	125	19 Dec 2018	13:44	
43	Kamera 1	150	23	127	19 Dec 2018	13:29	
44	Kamera 1	150	23	127	19 Dec 2018	13:14	



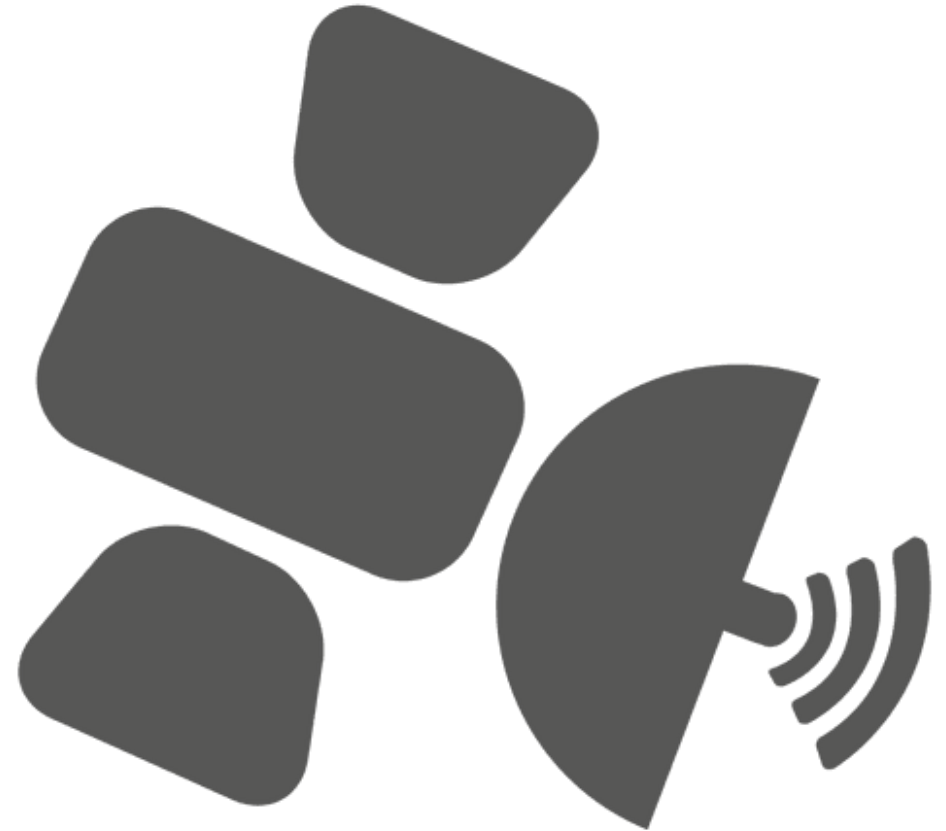
# Komunikasi Nirkabel

- Satellite
- GSM
- WiFi
- Low Range
- RFID



# Teknologi Satellite pada IoT

- Coverage
- Reliability
- Speed
- Cost
- Integration



# Data

- Pengolahan Data
- Keamanan data
- Kepemilikan data
- Interoperable



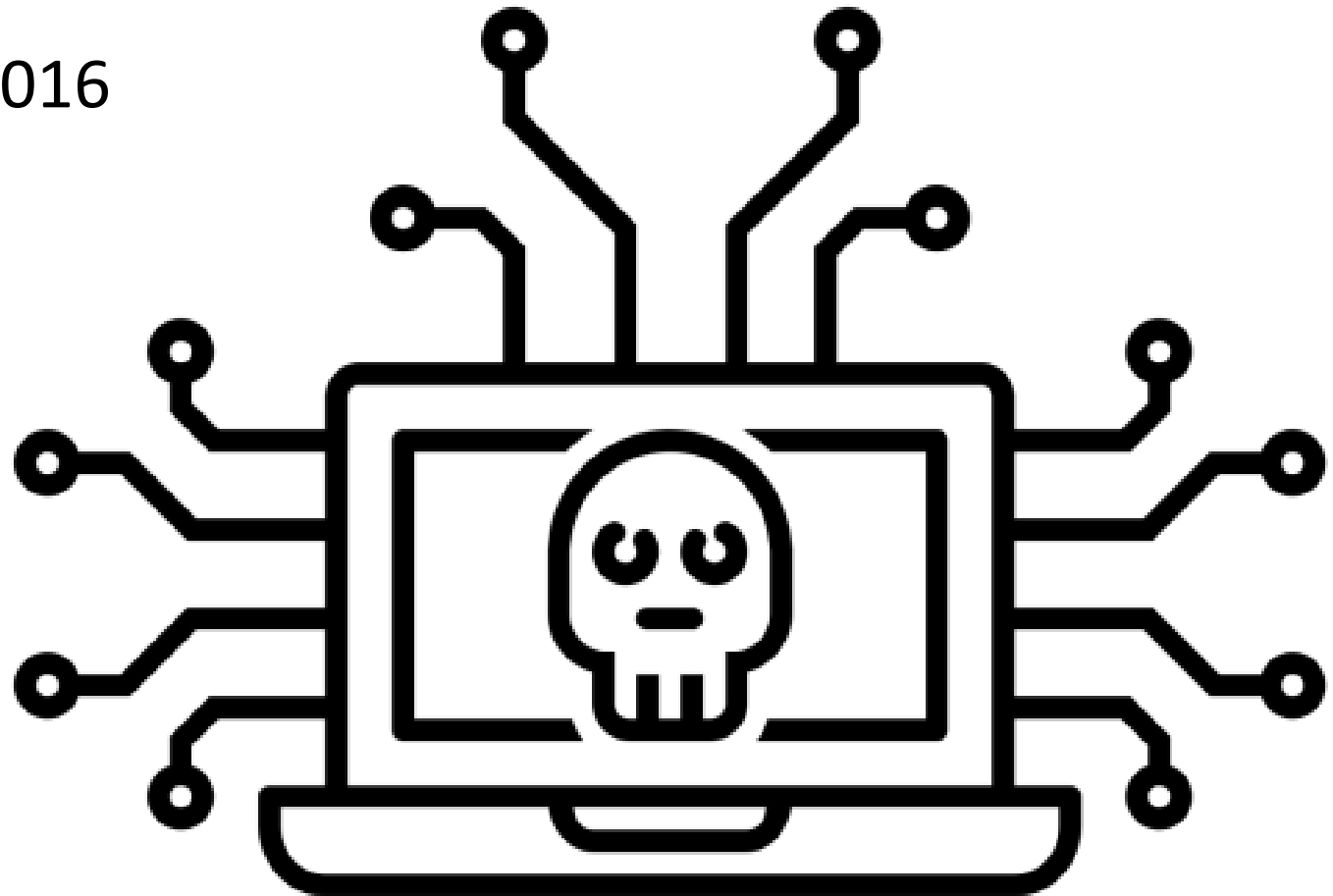
# CyberAttack

- Denial Of Service

Dyn cyberattack pada Oktober 2016

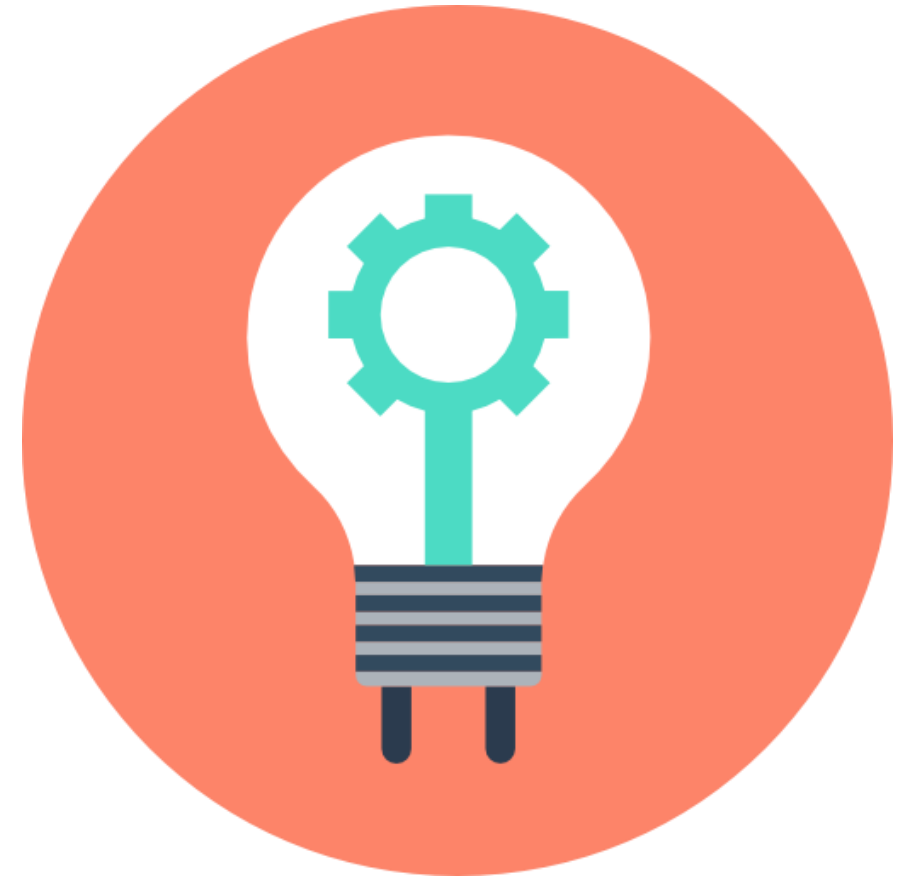
- System Hijacker

Muni Public Transit pada  
November 2016



# Tantangan IoT

- Biaya Rendah
- Energi Rendah
- Ketersediaan Tinggi
- Aman
- Reliabilitas Tinggi
- Cepat





Terimakasih